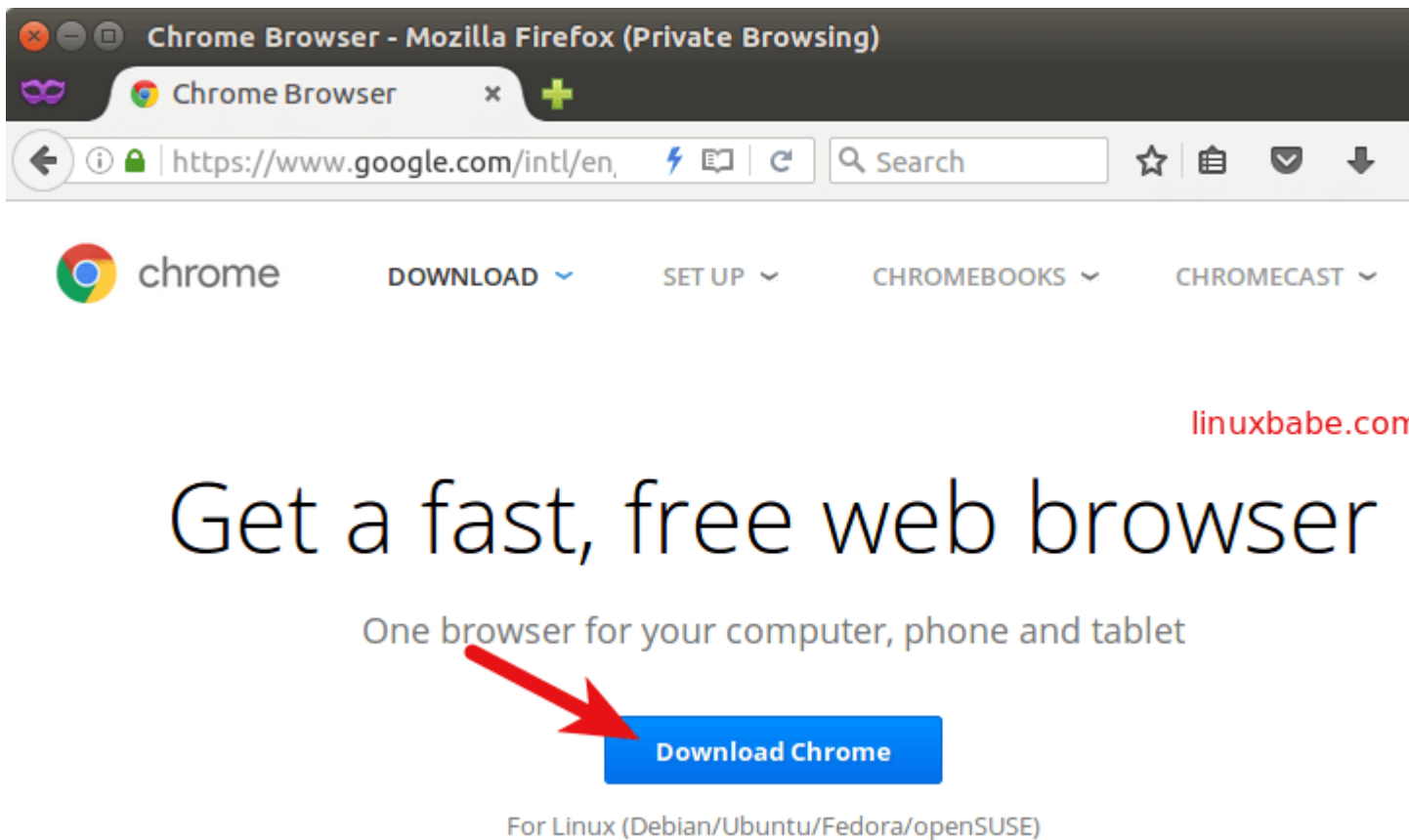


Install Google Chrome on Ubuntu 16.04/17.10 the Graphical Way

Go to <https://www.google.com/chrome>. Click the Download Chrome button.




Then select the first option (64 bit .deb for Debian/Ubuntu), click Accept and Install.

Download Chrome for Linux

Debian/Ubuntu/Fedora/openSUSE

linuxbabe.com

Please select your download package:

64 bit .deb (For Debian/Ubuntu) 

64 bit .rpm (For Fedora/openSUSE)

Not Debian/Ubuntu or Fedora/openSUSE? There may be a community-supported version for your distribution [here](#).

Google Chrome Terms of Service


These Terms of Service apply to the executable code version of Google Chrome. Source code for Google Chrome is available free of charge under open source software license agreements at <http://code.google.com/chromium/terms.html>.

1. Your relationship with Google

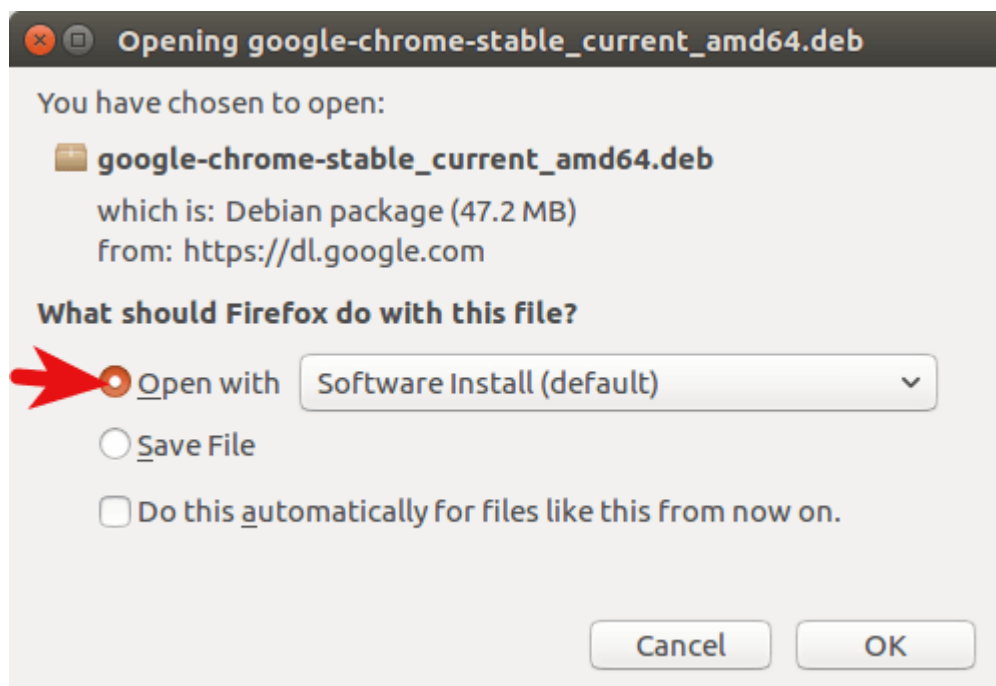
1.1 Your use of Google's products, software, services and web sites (referred to collectively as the "Services" in this document and excluding any services provided to you by Google under a separate written agreement) is

[Printer-friendly version](#)

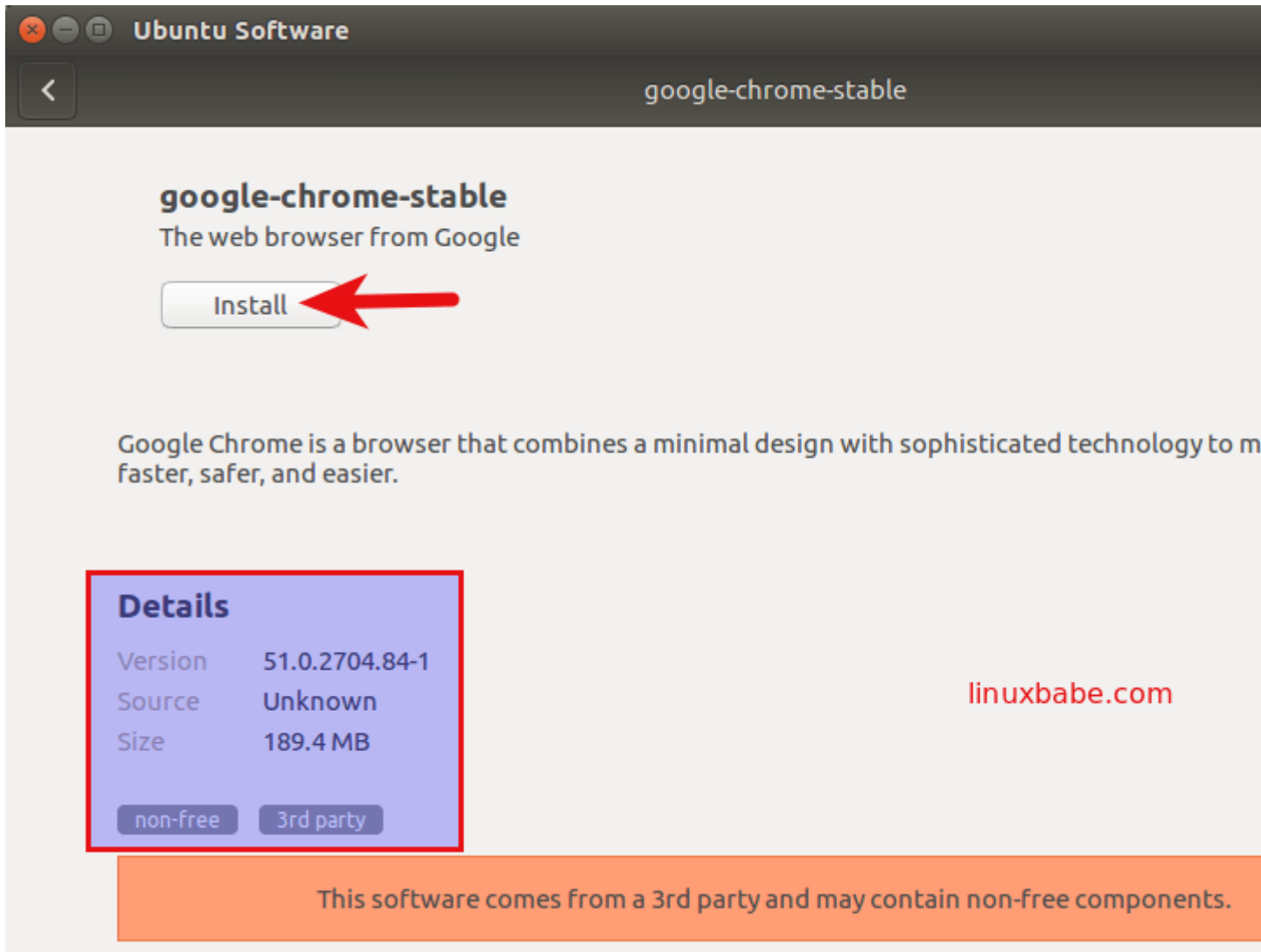
Note: Installing Google Chrome will **add the Google repository** so your system will automatically keep Google Chrome up to date. If you don't want Google's repository, do "sudo touch /etc/default/google-chrome" before installing the package.

 **Accept and Install**

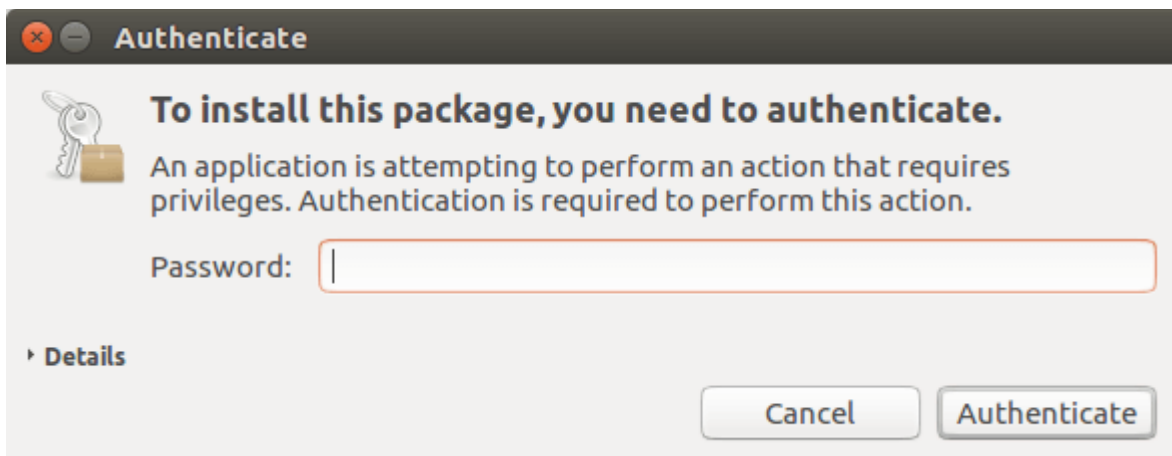
When Firefox asks you how to open this deb file, choose the default option to open it in Ubuntu Software (formerly Ubuntu Software Center).



If you choose the first option, Google Chrome deb package will be downloaded to /tmp/mozilla_\$username directory. Once the download is complete, Ubuntu Software will automatically open. Click the Install button to install google-chrome-stable to Ubuntu 16.04/17.10. The version and installation size information can be seen in the Details section. 189.4MB of disk space! That's huge for a Web browser.



Because software installation on Linux requires root privilege, so you have to enter your password to authenticate.





Once the installation is complete, you can start Chrome browser in the Unity Dash or by typing the following command in the terminal.

```
google-chrome-stable
```

